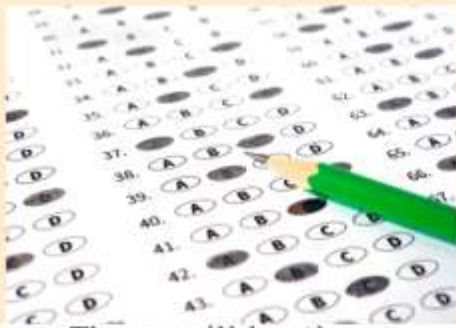




# COURSE EVALUATION



There will be three non-cumulative multiple choice exams (50 points each)



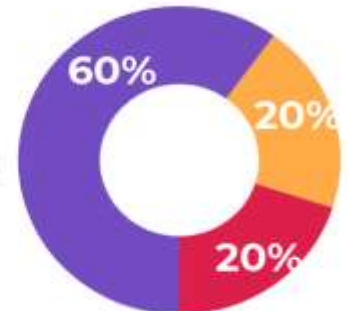
Participation will be tallied daily (50 points)



There will be one course travel journal project (50 points)

## YOUR GRADE

To ensure that there are no surprises, I strongly recommend that you keep a running tally of your grade throughout the semester (your grade = number of points received to date/number of possible points to date). I post your grades on Sakai.



### Exams (150 points total)

There will be three non-cumulative exams in this class (50 points each, 150 points total). If you miss an exam and have a well-documented excuse (i.e. sick with a doctor's note, death in the family, etc.) you will be allowed to take a make-up exam. If you do not have a well-documented excuse, you will receive a zero for that exam grade. You must notify me BEFORE the exam in order to take a make-up.

### Class participation (50 points total)

I do my best to make class educational and entertaining but I expect you to do your part, too. I expect you to contribute to class by asking questions and offering observations. If you are not in class or do not participate when you attend, you will lose participation points. I generally divide students into three tiers of participation. Someone in the top tier will have attended all classes and contributed in each and every one. Someone in the second tier might have strong attendance but not contribute on a regular basis. Conversely, they may miss a few classes but offer strong insight or ask pointed questions when in class. Someone in the third tier will likely miss several classes and contribute rarely. At the beginning of class, I will ask you to sign in and when you contribute in class, I will take note.

### Travel Journal Project (50 points total)

You will also create a 10-page travel journal detailing how your experiences in London reflect what we learn in class. This assignment is purposely broad. I want you to reflect on how studying abroad has changed your view of how we approach the study of sex and gender. More details will be discussed and we will work on daily entries in class.

Percentage	Grade	Percentage	Grade	Percentage	Grade
93%+	A	80-82.99%	B-	65-69.99%	D+
90-92.99%	A-	77-79.99%	C+	60-64.99%	D
87-89.99%	B+	73-76.99%	C	below 60%	F
83-86.99%	B	70-72.99%	C-		

## ACCESSIBILITY RESOURCES AND SERVICES

If you have a documented disability and wish to discuss academic accommodations, please contact me. The Accessibility Resource and Service can also provide you with information and review appropriate arrangements for reasonable accommodations. You can contact them at: 919-962-8300 or [accessibility@unc.edu](mailto:accessibility@unc.edu).

## THE FINE PRINT

### Cell Phones and Laptops

Please silence your phone before class. Please do not read or send text messages in class (I know, I know – it's tough. But the more focused you are in class, the smoother the course will go).

Phones should be off and securely stored, out of view, before exams. If you bring your laptop to class, please use it to take notes or to follow along when we do worked examples. Facebook and Twitter can probably wait until the class is over.

### Academic Integrity

By taking this class, you agree to adhere to UNC's Honor Code. If you have any questions about this honor code, please refer to: <http://advising.unc.edu/for-faculty/academic-policies-and-procedures/unc-honor-code/>. Please do not cheat. University policy dictates that I must report every instance of academic dishonesty, no matter how small, to the Honor Court.

All policies that apply at UNC also apply at King's College for this course.

It would also be beneficial to familiarize yourself with local laws and policies.

### CONTENT WARNING!

**Issues regarding sex and gender can be difficult to talk about. It can also be hard to learn about. Therefore, I ask that you come to class everyday with an open mind. Your experiences may be different than the experiences of others. Please respect each other as we discuss these social issues.**

**I also ask that everything that is said in class is kept confidential – that is to say, please don't leave class after an emotional discussion and tell your friends that John/Jane Doe said X, Y, and Z. I want this to be a place where we feel comfortable discussing our experiences.**

**If, however, you ever feel uncomfortable with course discussions/topics, you may leave WITHOUT incurring a penalty.**

## LET'S TALK

My job (and my joy) is to help you learn the course material! I want you to succeed and I will do everything in my power to help you throughout this course.

I recognize that taking this course in London presents unique opportunities and challenges. I am your first point of contact in the event you need anything. You can get in contact with me 24/7 on my mobile +1 (616) 443-4043. Second, you can email me at [pharrison@unc.edu](mailto:pharrison@unc.edu).



PLEASE let me know if you will be leaving London for any period of time.

# COURSE SCHEDULE

(due dates are subject to change, with notification)

Date	Topic	Readings	Important Dates
<b>Week 1</b>			
7/02	Introduction to Sex and Gender/Methodology	Ch.1-2	
7/03	Gender Role Stereotypes	Ch. 3	
7/04	Sex Differences	Ch. 4	Museum of London
7/05	Biological Perspectives	Ch. 5	Outing (7/5)
7/06	Review/Exam 1	Ch. 1-4	Exam 1 Travel Journal 1
<b>Week 2</b>			
7/09	Social Psychological Perspectives	Ch. 5	
7/10	Developmental Perspectives	Ch. 5	
7/11	Sex and Sexual Orientation	TBD	Freud Museum
7/12	Sex and Sexual Orientation	TBD	Outing (7/11)
7/13	Review/Exam 2	Ch. 5	Exam 2 Travel Journal 2
<b>Week 3</b>			
7/16	Communication and Relationships	Ch. 7-9	
7/17	Communication and Relationships	Ch. 7-9	
7/18	Physical Health	Ch. 10	The Ripper Tour
7/19	Mental Health	Ch. 13	Outing (7/18)
7/20	Review/Exam 3	Ch. 7-13	Exam 3 Travel Journal 3

powered by